

Thank you for seeking out the services of your Ohio State University Extension Office!

In order to quickly and accurately identify your vegetation issues, please take photographs of the problem area(s), answer the following questions to the best of your ability and e-mail them to me at Hampton.297@osu.edu.

Type of plant:

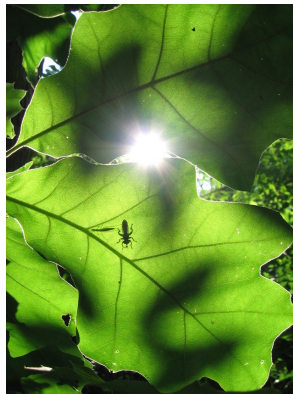
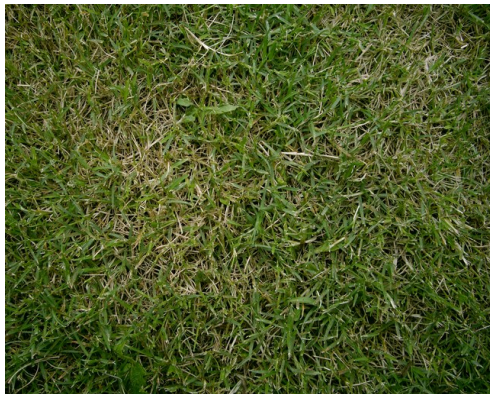
Overall health of plant:

When did symptoms first appear:

Has anything changed in the environment:

Are other plants being affected:

Describe abnormalities in detail. Include what you notice up close and at a distance:



Directions to get the best photos for diagnosis:

Take a picture of the whole plant, from a distance, showing it relative to it's landscape/environment

Take photos of the damage up close. If possible, avoid using the zoom function. This will lower the quality of the image. It is better in this situation to bring the camera physically closer to the object.

Take photos of any holes or abnormalities. Be sure to check the stems, trunk, branches, and visible roots.

Take photos of any fungus or insects you may find on the plant.

